

# KINGTOYS

**MANUEL EN COURS DE TRADUCTION**



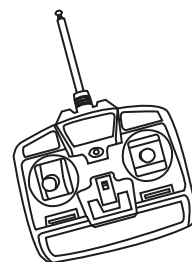
**RIDER CONCEPT**

Importateur de loisirs innovants

# ROADSTER Z4 50W

## Voiture électrique KINGTOYS

Avec télécommande



- Adapté aux enfants de 3 à 8 ans
- Capacité maximum : 30kg
- Le montage doit être effectué par un adulte

Conserver ce manuel.  
Avant la première utilisation, charger la batterie durant 4-6 heures.

Use the product please first read instructions, it will tell you the correct methods of operation and installation instructions. To avoid not correct methods of operation of this product damage or injury and your baby.

Manual should be placed to take good care of.

It's STANDARD NO.: EN71 EN62115

**The product to get c is the main ingredients of the important parts.**

## **SPECIFICATION**

Battery	2*6V4. 5AH
Motor	12V30W、 12V15W
Charger	Input:AC220V-240V、 50HZ-60HZ, Output:DC12V1A
Maxmium load	30 KG
Work Time	Recharge 8-12h, Use for 1-2h
Speed	3-5 KM/H
Age	37 months - 96months
R/C Battery	AAA 1.5V * 2
R/C Distance	15 ± 5M

## **SAFE RULES**



**Warrnning**

**Non-transportation, must be care of adult!**

**Before using the child for education, safety!**

1. Be charged by an adult, don't let the children touch.
2. Driving, we must by adults, and the tutelage use.
3. Clamp down on the streets, roads, slope, waiting for over a backward, to eliminate obstacles to ride.
4. It's suitable for children for about 37-96 months.
5. Cycle shall not leave the seat to prevent operation resulting in injury.
6. In the car was pulled, the device, such as a block, please immediately release switch to eliminate the obstacles and foot before you ride.

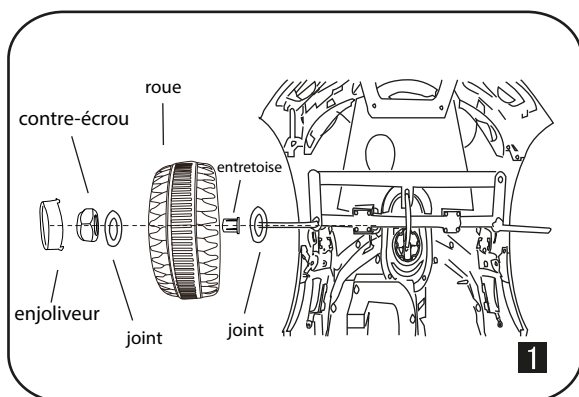
## **CHARGE METHOD**

- 1.First to use please open the cushion , and the battery connections with main distributing frame, with red in red and black in black, not a line ends meet, or cause a short-circuit.
- 2.Charging socket the cushion down side, and needs recharging. charger plug in the outlet, then insert the power outlet.
- 3.The train slowly, in charge, the time for 8-10 hours, and not more than ten hours.
- 4.In the first to use the deposit, we must ensure that the cell battery up to 10 hours. otherwise, permanent damage cells and beyond repair.
- 5.Charging devices or battery which has a fever (60 C) are normal.
- 6.The electric baby must use this car is equipped with the charger and the battery, in the case of broken the cell phone chargers and the counter-voltage or an electric circuit.
- 7.Have to recharge the batteries to be recharged from the toy the use of battery.
- 8.Not mixed with the old and new or different types of batteries.
- 9.Can't insert the battery wire connector.
- 10.When the baby is not use for a long time, at least once every month to charge.
- 11.Toys can't connect to the surplus on the use of the recommended amount.
- 12.When the car is charging,can't use it.

## **PACKING LIST**

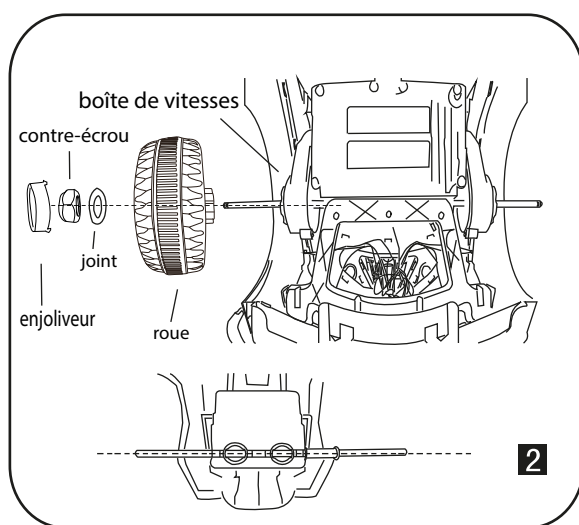
★ Car body (polypropylene)	1PC	★ Charger	1PC
★ The steering wheel	1PC	★ MP3 connector	1PC
★ Chair	1PC	★ Manual	1PC
★ Car wheel, blocks	4PCS	★ Remote controller	1PC

# Etapes de montage



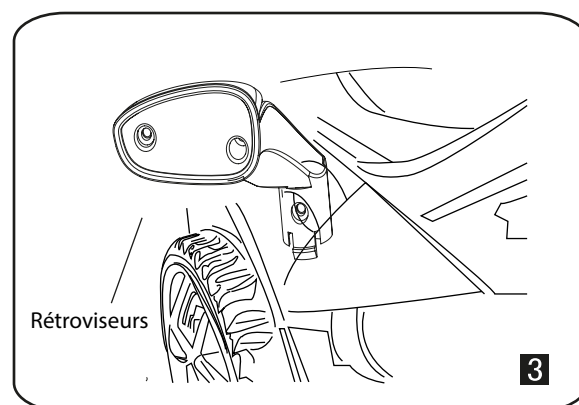
## Montage des roues avant

Faire glisser un joint sur l'essieu avant, puis une entretoise. Ensuite, insérer la roue sur l'essieu. Puis, insérer un autre joint à sécuriser avec un contre écrou. Enfin, mettre l'enjoliveur. (Suivre le modèle du schéma 1 ci-contre)



## Montage des roues arrière

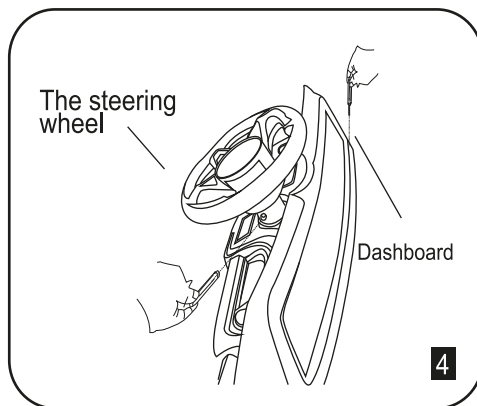
Mettre la roue arrière sur l'essieu arrière, puis ajouter un joint. Sécuriser ensuite avec un contre-écrou. Enfin, mettre l'enjoliveur. (Suivre le modèle du schéma 2 ci-contre)



## Montage des rétroviseurs

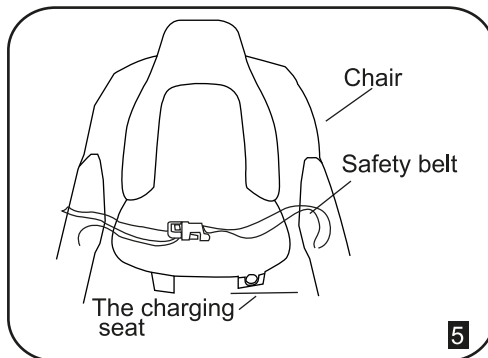
Insérer les languettes des rétroviseurs dans les fentes prévues à cet effet sur le véhicule. Appuyer jusqu'à entendre le clic qui indique que les rétroviseurs sont bien en place.

## UNIT MOUNT



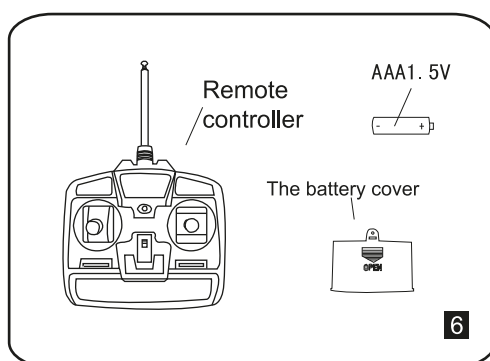
### Install the steering wheel

Will line connectors and direction in the direction of dish stem line connectors are connected (note that connect the positive and negative). Then put the steering wheel in the direction of the pole, with the M5 inner hexangular set screw rod through the steering wheel and direction in turn. (as shown in figure 4)



### Charging instructions

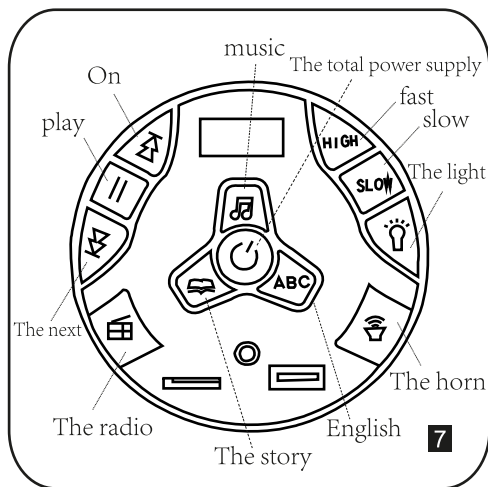
Before installing seat first connect the positive, and then put seat in the specified location, card hook body card slot, then put the front seat fixed on both sides of the hole with the screw clockwise tightened when charging, open cover charge first, and then insert the charger to charge hole, when charging the vehicle without any function. (as shown in figure 5)



### Remote control battery installation

First use the screwdriver to unscrew the screw on the battery cover, then take out the battery cover and remote control into two AA1.5 V batteries, and battery cover cover and screw locking. (see figure 6)

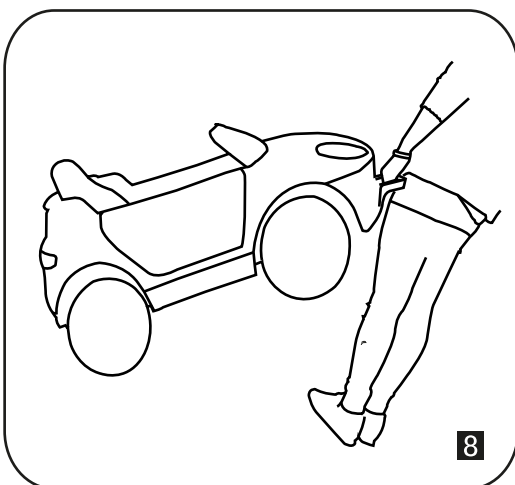
# Install know that



## Function of the instructions

1. Open the dashboard right measuring total power supply first, the control panel lights light up.
2. Some dynamic music symbol key, the music sounded. Located in the upper left is the play button and the first switch button up and down. Sound size adjustment will switch first bond length according to the up and down, just can achieve.
3. The key point moving story, play the story at this time.
4. ABC at key, broadcasting English at this time.
5. Move the radio icon, you can search the radio channel.
6. Light icon at the vehicle lights light up at this time.
7. Some dynamic speaker icon, vehicle delivered when the horn.
8. Some HIGH and missile icon, at this point the vehicle can be realized according to the prompt instruction of fast and SLOW.
9. The radio on the top left corner of the USB interface, the following for the memory card inserted into the mouth. And next to the MP3 jack.
10. Puts forward backward switch forward, stepping on foot switch the car to drive forward. Puts forward backward switch back, stepping on foot switch backwards moving vehicle. Back switch is set forward, stepping on foot switch state of the car to stop at this time.
11. A red circle switch to swing start button, turn on the switch can realize the swing function.

Note: the remote control is preferred.  
(as shown in figure 7)



## The use of hand in hand and pulley

When the vehicle has no power, first of all your children from the car, and then the rear support of the pulley to open, and then pull the front support of the handle. You can easily bring the car home. (as shown in Figure 8)

# **TROUBLESHOOTING**

<b>PROBLEM</b>	<b>ANALYZE</b>	<b>SOLUTION</b>
Car doesn't work	• Low power	Recharge the battery
	• Damage of thermic fuse	Change with new thermic fuse
	• Lose of wheel nut	Use new nut
	• Loose of battery connector	Put on the connector
	• Exhaust & bad battery	Change with new battery
	• Damage on electrical parts	Go to repair shop
	• Damage on motor	Go to repair shop
Battery can't be recharged	• Loose of the battery connector	Tighten the connector
	• Charger doesn't plug the power	Plug charger with power
	• Damage of charger	Change new charger
Short of run time	• Battery with lower power	Recharge the battery fully
	• Battery is old	Change new battery
Noise & Heat during recharge	• It's chemical process	It's normal & safety
Low Speed	• Old battery	Use new battery
	• Low power	Recharge the battery fully
	• Over burden	Reduce burden under 25KG
	• Run on not-flat ground	Run on flat ground
Noise of gear box	• Damage of gear box	Go to repair shop
	• Damage on motor	Go to repair shop
Car shake when running	• Bad connect of motor wire	Reconnect the wire
	• Motor doesn't work well	Go to repair shop
No sound & light when running	• Loose of sound & light wire	Connect the wire
	• Damage of sound & light board	Go to repair shop
Car can't stop in run	• Damage of electrical parts	Go to repair shop
Unusal working condition under Remote control	• Remote control battery exhaust	Change battery
	• Remote control out of distance	Keep near distance between car and remote control
	• Damage of remote control	Damage of remote control
	• Damage of receiver board	Change receiver board
	• Disturb of magnetic filed	Far away from magnetic filed



## **USE CAUTIONS**

1. In the first to use the deposit, we must ensure that the cell battery up to 10 hours. otherwise, permanent damage cells and beyond repair.
2. In the streets, roads, slope, ditch and the danger area.
3. Please don't on the polished surface, such as marble, tile on the surface.
4. This product by one, not limit, the greatest relief to over 30KG.
5. Don't run in an electric switch on deposit in the back of the light switch.
6. Shall not be altered the car circuit or device to additional charged
7. The remote control and not to let it get caught in the rain or otherwise made in water and keep away from sources of ignition to avoid causing the damage.
8. Met with obstruction, the baby stop, please leave the obstacles to ride.
9. Don't use in the water, water and other liquids in the car.
10. Not in use, to avoid hitting the child.
11. When the remote control battery power is low, the car on the remote control and turned back, a short distance, shake, please replace the battery!
12. Not in use, please turn off the switch. no, please unplug the battery, a connector.
13. The types of batteries that may be used.
14. How to remove and insert the batteries.
15. Non-rechargeable batteries are not to be recharged.
16. rechargeable batteries are only to be charged under adult supervision (for toys supplied with a battery charger for use by children, this instruction may be replaced by. "Batteries are only to be charged by adults or by children at least 8 years old")
17. Rechargeable batteries are to be removed from the toy before being charged.
18. Different types of batteries or new and used batteries are not to be mixed.
19. Batteries are to be inserted with the correct polarity.

20. Exhausted batteries are to be removed from the toy.
21. The supply terminals are not to be short-circuited.
22. Toys shall be provided with instructions for assembly if.
23. They are intended to be assembled by a child.
24. These instructions are necessary for safe operation of the toy.
25. Instructions shall be provided that give details concerning cleaning and maintenance when necessary for the safe operation of the toy.
26. They shall state that transformers or battery chargers used with the toy are to be regularly examined for damage to the cord, plug, enclosure and other parts, and in the event of such damage, they must not be used until the damage has been repaired.

### **DECLARATION:**

- 1) Manual used in illustrations to explain the product of the operations and products, with the installation of structure in the existence of a small difference in kind, please standard the object.
- 2) In order to improve product quality, not to notice, we may change the part of the structure, and appearance. please forgive.
- 3) This package contains important information that must be to keep.
- 4) Cannot be used in rainy days.
- 5) Can not use water to clean.
- 6) Assembly by an adult.”
- 7) Protective equipment should be worn. Not to be used in traffic.”

## Safe use of rules

Must by adults on the local assembly, please check whether the device and circuit assembly assembly process correctly.

Default of banned in the streets, highways, landslides and other dangerous places.

Children must be under the custody of adult use.

When used on the local, please do not casually change device.

When use, shall not be frequently switch forward backward function.

Please check the battery, line, plugs, and other parts for damage and found damaged, please stop using in time,

Until the restored can be reused.

The rechargeable battery can't charge.

Should be in the right electrode in the battery.

Run out of battery should be removed from the toy.

The power terminals shall not be short

## Charging matters needing attention

1, using electric vehicles for the first time to charge first! Charging in car tail, charging charging Cover first then put the plug in the charging socket, then the charger plugged in. (charging must Be made into do, do not let your children's access to power supply)

2, please recharge immediately when electric vehicle driving speed slowed significantly, continuous Charging 8 to 10 hours, not more than 10 small at the right time.

3, in the process of charging the charger or battery have fever phenomenon (under 60 °) are Normal.

4, the electric car must use local car equipped with dedicated charger and battery, so as not to Damage the charger and battery and electric circuit.

5, the electric vehicle charging shall not do any operation.

6, please a mixture of old and new or different types of batteries.

7, electric vehicle charging, please check whether the circuit connection is correct.

8, when the electric conductor time when not in use, must charge at least once every month.

**Warning:** electric car used in non private places, may lead to drowning, burns, falls and other hazards.



## Using The Matters Needing Attention

Products should be assembled by adult right before use.

Battery charging should be carried out by adults, must first be charged before using this product.

The first use of electric vehicles, must ensure that the battery full 10 hours! Otherwise it would be permanent damage

Pool and beyond repair.

Please don't in the street, the road, landslides and other dangerous places, and be sure to use under adult supervision.

This product is limited to a person, do not overload, the largest capacity of 30 kg.

Please fasten your seat belt, and make sure that your baby is always sat on the bench, at the same time, please do not let the baby in

Runtime stand or do some dangerous action.

Please don't suddenly change in the process of electric vehicles run forward/backward switch. To prevent collisions with valuables, please do not use in a relatively narrow space, in order to avoid damage to electric vehicles.

Please check the product and the charger, check the wires, plugs, shell packaging and other components

Damaged, found that the damage should stop using, to be repaired before use.

When not in use for a long time, please turn the power off and remove the battery connector.

Children must use under adult supervision.

Safe use period: three years.