

KINGTOYS

MANUEL EN COURS DE TRADUCTION



RIDER CONCEPT

Importateur de loisirs innovants

SLIPER 18W

Moto électrique KINGTOYS



- Adapté aux enfants de 3 à 8 ans
- Capacité maximum : 30kg
- Le montage doit être effectué par un adulte

MANUEL DE MONTAGE

Conserver ce manuel.

Avant la première utilisation, charger la batterie durant 8-12 heures.

On the purchase of your new Ride-On.

This ride-on car will provide your child with many miles of riding of enjoyment. To help assure you and your rider a safe ride we ask you to please read this manual carefully, and keep it for future reference.

Follow the recommendations in this manual, they are designed to improve the safety and operation of your ride-on car and it's rider.

Specification

Age:	Dès 3 ans
Car Size:	66 x 34 x 44 cm
Poids:	Max 30kgs
Battery:	6V 4.5AH x1
Charging Time:	8~12 hours
Speed:	2.5 KM/h
Charger:	Input: Depend on local voltage. output: DC6V500mA
Motor:	380-6V-12000MPH



BATTERY INFORMATION

- Non-rechargeable batteries are not to be recharged.
- If removable rechargeable batteries are used, they are only to be charged under adult supervision.
- Remove rechargeable batteries from the product before charging.
- Do not mix old and new batteries. Do not mix different types of batteries: alkaline, standard (carbon-zinc) or rechargeable (nickel-cadmium).
- Insert batteries as indicated inside the battery compartment, anode to anode, cathode to cathode.
- Remove batteries during long periods of non-use. Always remove exhausted batteries from the product. Battery leakage and corrosion can damage this product. Dispose of batteries safely.
- Never short circuit the battery terminals.

Parts List

B

NO.	PART NAME	Q'TY (PCS)	REMARK
1	Vehicle body	1	
2	handle bar	1	
3	Seat	1	
4	Face guard	1	
5	Windshield	1	
6	Front fender	1	
7	Front fork	1	
8	Front axle	1	
9	Rear axle	1	
10	Front wheel	1	
11	Rear wheel	2	
12	Φ8 washer	4	
13	Lock nut	4	
14	Bushing	2	
15	Φ5 nut	1	Placed on the handle bar
16	M5x35 machine screw	1	Placed on the handle bar
17	Spanner	2	
18			

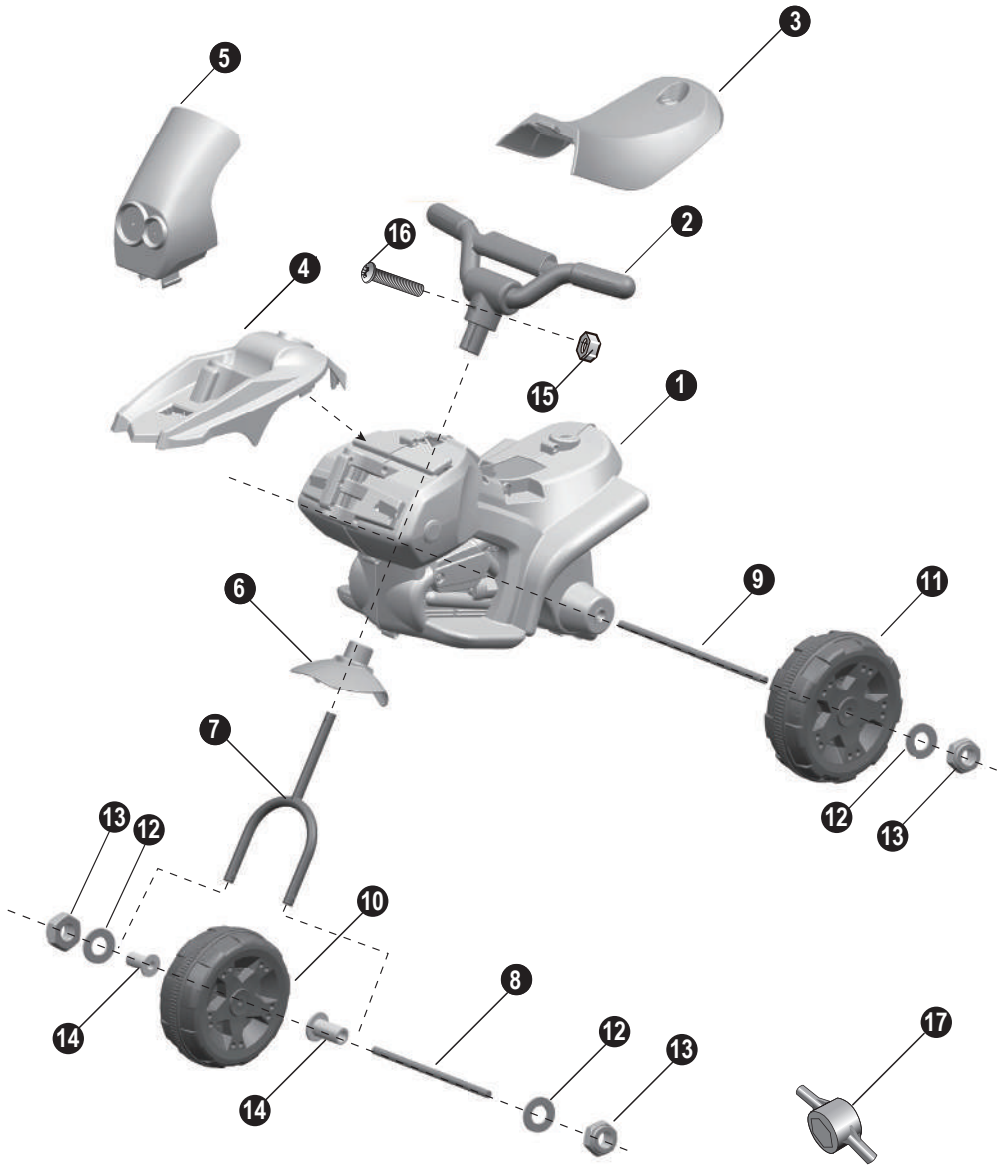


WARNING:

- **CHOKING HAZARD!** Not suitable for children under 36 months.
- **ADULT ASSEMBLY REQUIRED.**

Parts Diagram

NOTE: Some parts shown are assembled on both sides of vehicle



Spanner



PREVENT INJURIES AND DEATHS:

- **NEVER LEAVE CHILD UNATTENDED. ADULT DIRECT SUPERVISION IS REQUIRED.** Always keep child in view when child is in vehicle.
- This toy should be used with caution since skill is required to avoid falls or collisions causing injury to the user or third parties.
- Protective equipment should be worn.
- Never use in roadways, near cars, on or near steep inclines or steps, swimming pools or other bodies of water.
- Always wear shoes, always sit on the seat.
- Not to be used in traffic.
- This toy is unsuitable for children under 36 months due to its maximum speed; Maximum user weight is 30 kgs.
- This toy has no brake.

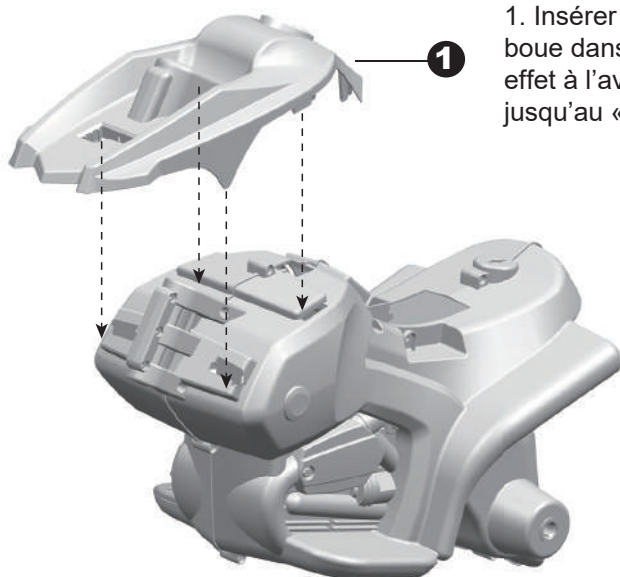


WARNING:

- **CHOKING HAZARD!** Not suitable for children under 37 months.
- **ADULT ASSEMBLY REQUIRED.**

Rules for Safe Riding

- Keep Children within Safe Riding Areas:
 - Never use in roadway, near motor vehicles, on lawn space, on or near steep inclines or steps, swimming pools or other bodies of water;
- Use the toy only on flat surfaces. Such as inside your house, garden or playground.
- Never use in the dark. A child could encounter unexpected obstacles and have an accident. Operate the vehicle only in the daytime or a well-lit area.
- It is prohibited to change the circuit or add other electric parts
- Inspect wires and connections of the vehicle periodically.
- Do not let any child touch the wheels or be near them when the car is moving .



1. Insérer les languettes du garde boue dans les fentes prévues à cet effet à l'avant du véhicule et appuyer jusqu'au « click ».

2. Glisser l'aile avant sur la fourche par l'extrémité droite.

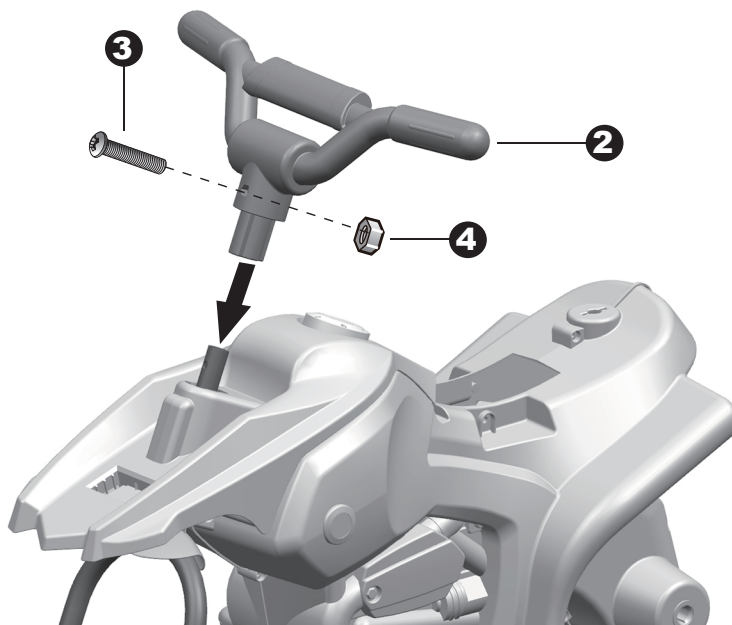
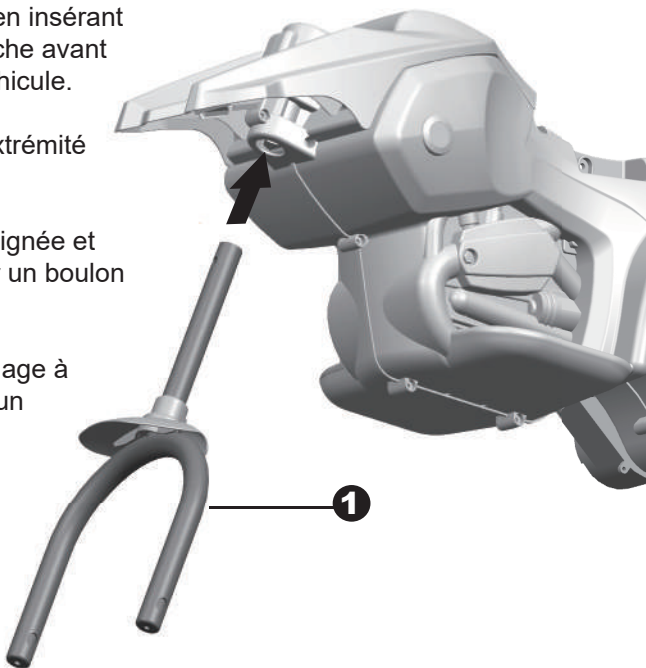


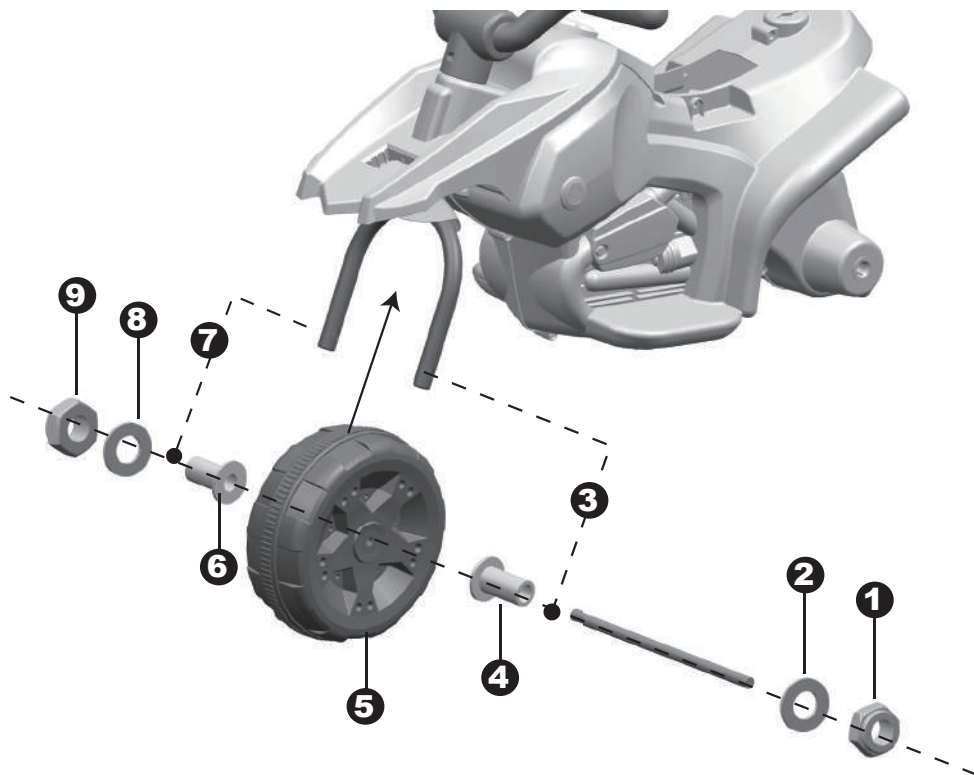
1. Relever le véhicule tout en insérant l'extrémité droite de la fourche avant dans le trou à l'avant du véhicule.

2. Mettre la poignée sur l'extrémité de la fourche avant.

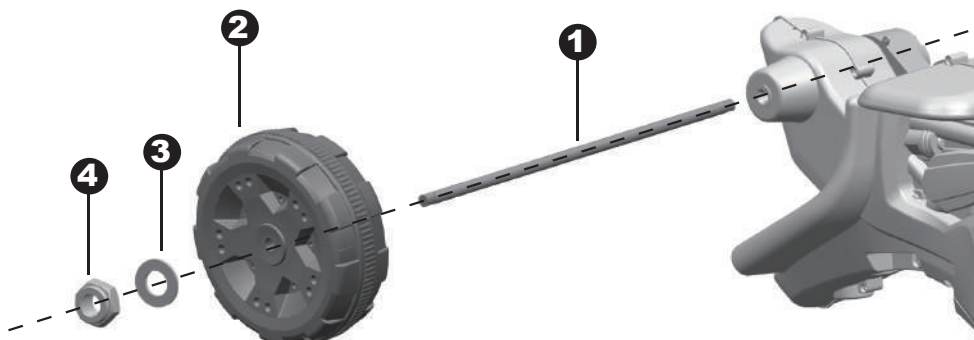
3. Aligner les trous de la poignée et de la fourche avant, insérer un boulon M5x35.

4. Serrer un écrou de blocage à l'extrémité du boulon avec un tournevis.



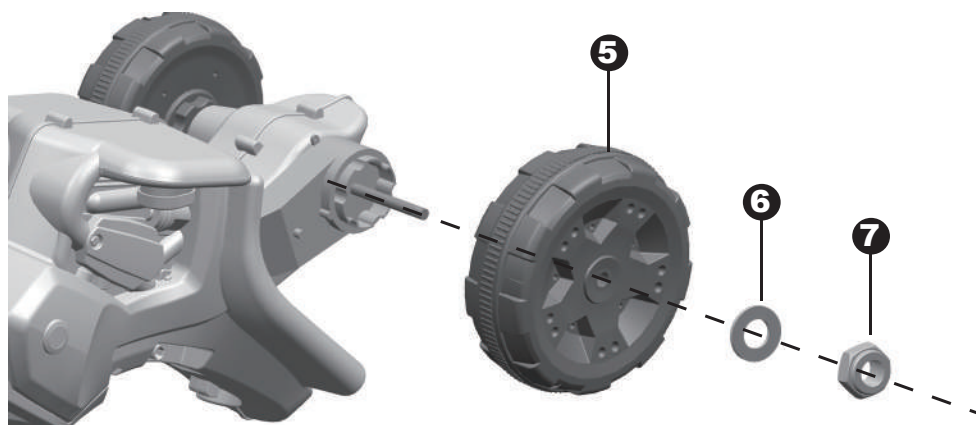


1. Serrer un écrou de verrouillage à la fin de l'essieu avant avec une clé.
2. Glisser une rondelle de $\Phi 8$ sur l'essieu avant.
3. Insérer l'essieu avant dans le trou de la fourche avant.
4. Glisser une douille sur l'essieu avant.
5. Glisser la roue avant sur l'essieu avant.
6. Glisser une autre douille sur l'essieu avant.
7. Pousser l'essieu avant jusqu'à ce qu'il passe à travers le trou de l'autre côté de la fourche avant.
8. Glisser une rondelle de $\Phi 8$ sur l'essieu avant.
9. Serrer un écrou de bloquage à l'extrémité de l'essieu avant avec une clé pour sécuriser la roue avant.



Retourner le véhicule horizontalement.

1. Insérer l'essieu arrière dans le trou prévu à cet effet à l'arrière du véhicule.
2. Glisser une roue arrière sur l'essieu arrière.
3. Glisser une rondelle de $\Phi 8$ sur l'essieu.
4. Serrer un écrou à l'extrémité de l'essieu avec une clé.

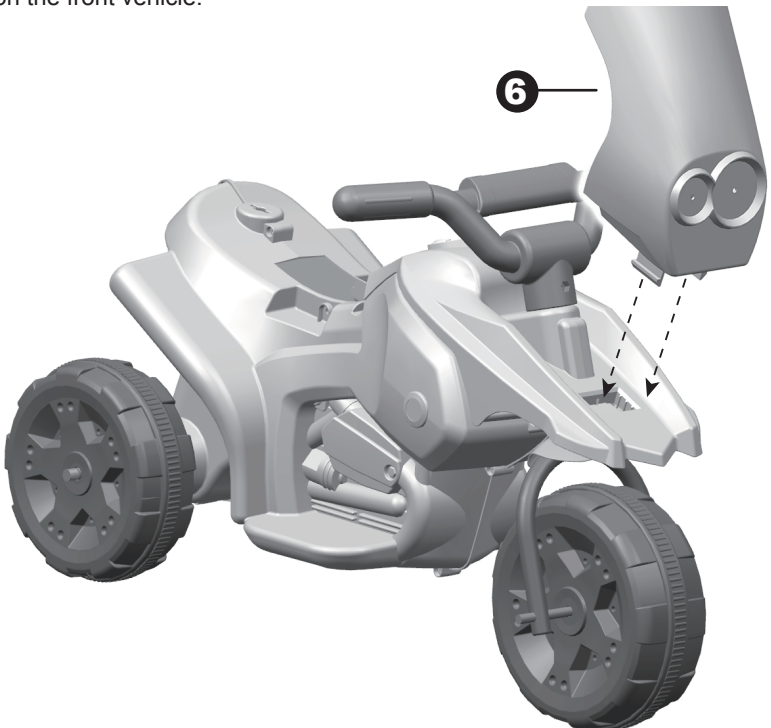
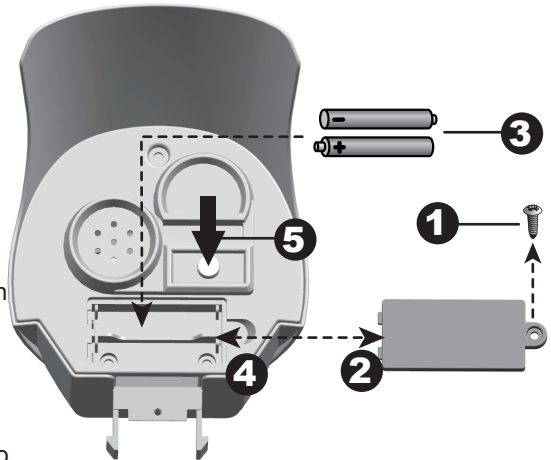


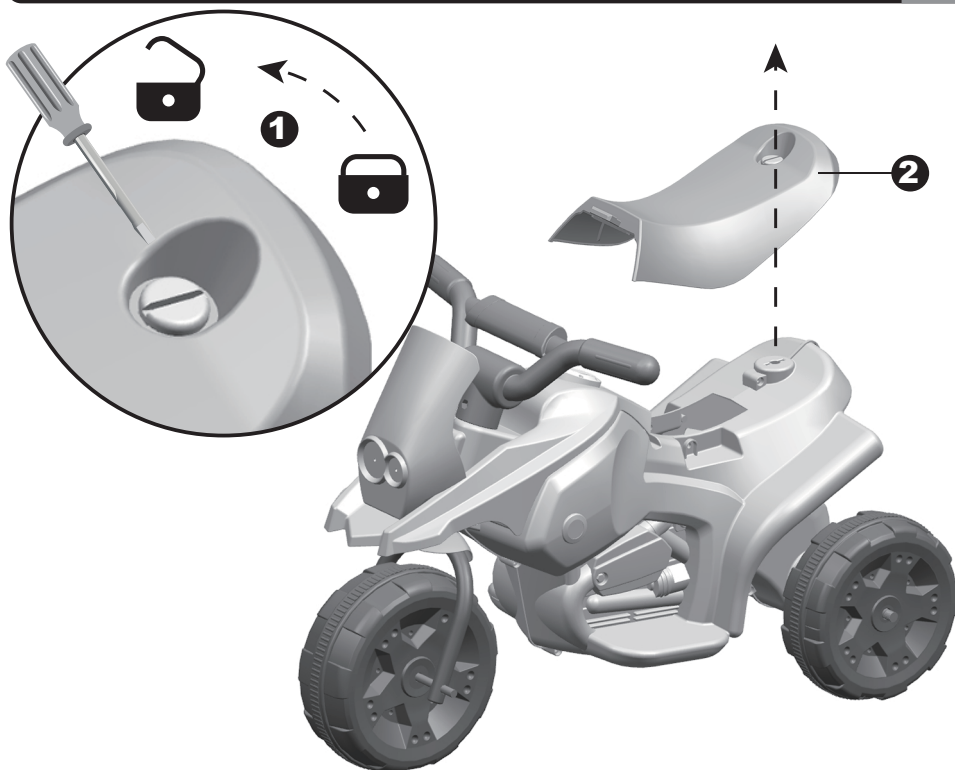
5. Glisser la deuxième roue arrière sur l'autre extrémité de l'essieu arrière.
6. Glisser une rondelle de $\Phi 8$ sur l'essieu.
7. Serrer un écrou à l'extrémité de l'essieu avec une clé.

Attach The Windshield

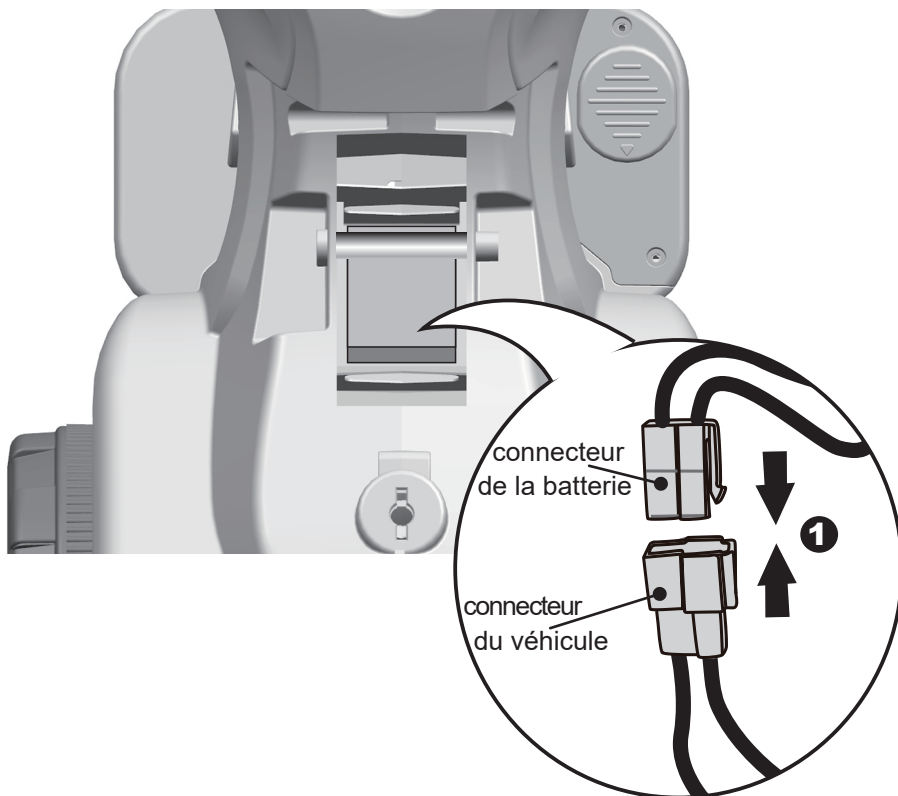
Refer to the battery information on page 1

1. With a screwdriver remove the screw on the battery cover of the windshield.
2. Remove the battery cover from the battery compartment.
3. Insert two AAA batteries in their correct polarities.
4. Place the battery cover over the battery compartment and fasten with the screw you removed in step one.
5. Press the button on the dash to check the sound unit whether work or not.
6. Insert the tabs on the windshield into the grooves on the front vehicle.





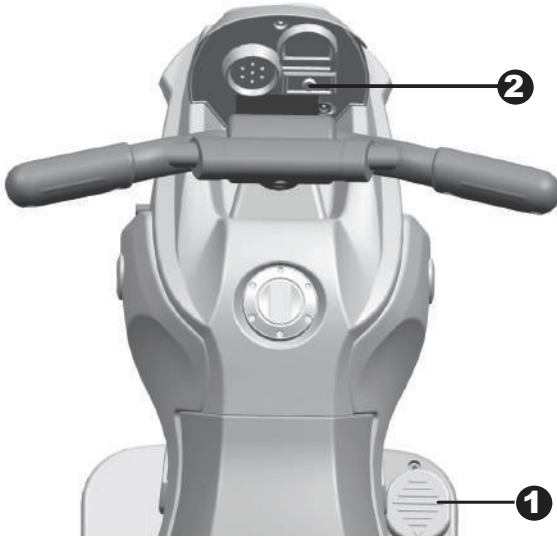
1. Tourner le verrou du siège pour débloquer la position avec un tournevis plat.
2. Retirer le siège.



1. Brancher le connecteur noir avec le terminal noir de la batterie.

Use Your New Vehicle

F

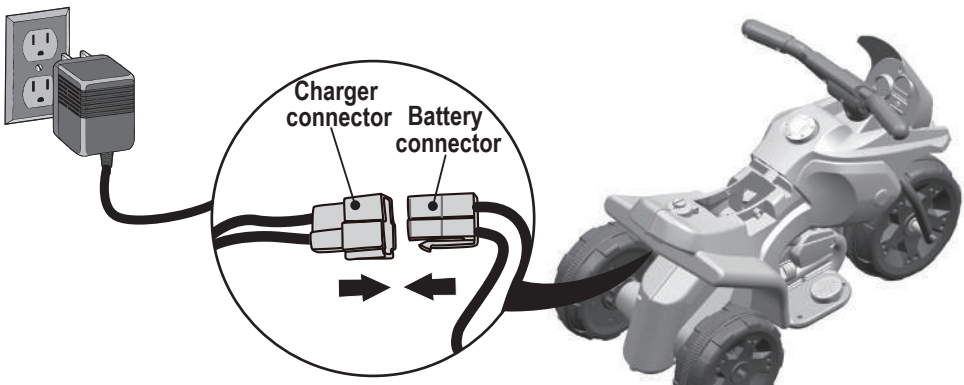


1. **Foot pedal:** To move the car, press the pedal down.
2. **Sound button:** Press the button for sound playing.

Charging

G

- The POWER SWITCH must be turned in **OFF** position when charging.
- Before the first use, you should charge the battery for 8-12 hours. Do not recharge the battery for more than 10 hours to avoid overheating the charger.
- When the vehicle begins to run slowly, recharge the battery.



1. Plug the charger port into the input socket. (The socket is located the rear vehicle)
2. Plug the charger plug into a wall outlet. The battery will begin charging.

- It is parents' responsibility to check main parts of the toy before using, Must regularly examine for potential hazard, such as the battery, charge, cable or cord, plug, screws are fastening enclosure of other parts and that in the event of such damage, the toy must not be until that damage had been properly removed.
- Make sure the plastic parts of the vehicle are not cracked or broken.
- Occasionally use a lightweight oil to lubricate moving parts such as wheels.
- Park the vehicle indoors or cover it with a tarp to protect it from wet weather.
- Keep the vehicle away from sources of heat, such as stoves and heaters. Plastic parts may melt.
- Recharge the battery after each use. Only an adult can handle the battery. Recharge the battery at least once a month when the vehicle Raider is not being used.
- Do not wash the vehicle with a hose. Do not wash the vehicle with soap and water. Do not drive the vehicle in rainy or snowy weather. Water will damage the motor, electric system and battery.
- Clean the vehicle with a soft, dry cloth. To restore shine to plastic parts, use a non-wax furniture polish. Do not use car wax. Do not use abrasive cleaners.
- Do not drive the vehicle in loose dirt, sand or fine gravel which could damage moving parts, motors or the electric system.
- When not using, all the electrical source should be turn off. Turn off the power switch and disconnect the battery connection.

Troubleshooting Guide

Problem	Possible Cause	Solution
Vehicle does not run	Battery low on power	Recharge battery.
	Thermal fuse has tripped	The fuse will reset automatically in 20 seconds.
	Battery connector or wires are loose	Check that the battery connectors are firmly plugged into each other. If wires are loose around the motor contact your distributor please.
	Battery is dead	Replace battery, contact your distributor please.
	Electrical system is damaged	Contact your distributor please.
	Motor is damaged	Contact your distributor please.
Vehicle does not run very long	Battery is under charged	Check that the battery connectors are firmly plugged into each other when recharging
	Battery is old	Replace battery, contact your distributor please.
Vehicle runs sluggishly	Battery low on power	Recharge battery, contact your distributor please.
	Battery is old	Replace battery, contact your distributor please.
	Vehicle is overload	Reduce weight on vehicle. Maximum user weight is 30 kgs.
	Vehicle is being used in harsh conditions	Avoid using vehicle in harsh conditions ,see <Safety>.
Vehicle needs a push to go forward	Poor contact of wires or connectors	Check that the battery connectors are firmly plugged into each other. If wires are loose around the motor, contact your distributor please.
	"Dead Spot" on motor	A dead spot means the electric power is not being delivered to the terminal connection and the vehicle needs repair. Contact your distributor please.
Loud grinding or clicking noises coming from motor or gear box	Motor or gears are damaged	Contact your distributor please.
Battery will not recharge	Battery connector or adapter connector is loose	Check that the battery connectors are firmly plugged into each other.
	Charger not plugged in	Check that the battery charger is plugged into a working wall outlet.
	Charger is not working	Contact your distributor please.
Charger feels warm when recharging	This is normal and not a cause for concern	

Completely read through this manual and the troubleshooting guide table before calling. If you still need help resolving the problem **Contact your distributor please.**



Recycle the dead battery responsibly. The battery contains lead acid (electrolyte) and must be disposed of properly and legally. It is illegal in most areas to incinerate lead acid batteries or dispose of them in landfills. Take it to a federal or state-approved lead acid battery recycler, such as local automotive battery retailer.

PREVENT INJURIES AND DEATHS:

- **NEVER LEAVE CHILD UNATTENDED. DIRECT ADULT SUPERVISION IS REQUIRED.** Always keep child in view when child is in vehicle.
- This toy should be used with caution since skill is required to avoid falls or collisions causing injury to the user or third parties.
- Protective equipment should be worn.
- Never use in roadways, near cars, on or near steep inclines or steps, swimming pools or other bodies of water.
- Always wear shoes.
- Always sit on the seat.
- Not to be used in traffic.
- This toy is unsuitable for children under 37 months due to its maximum speed; Maximum user weight is 30 kgs.
- This toy has no brake.

Our products are suitable for

ASTM F963; GB6675; EN71 and EN62115 standard.