

KINGTOYS

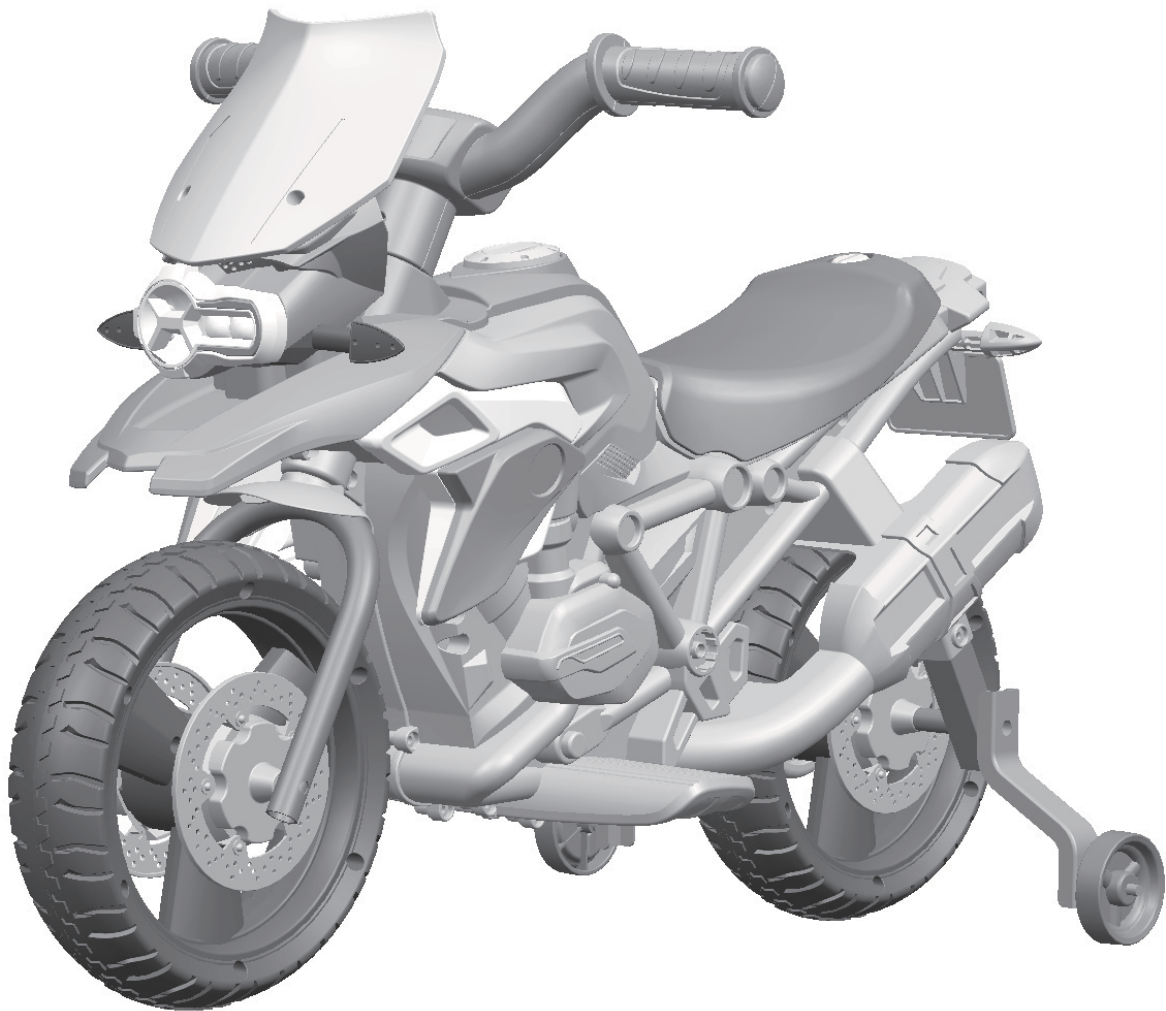
MANUEL EN COURS DE TRADUCTION



RIDER CONCEPT

Importateur de loisirs innovants

CHILDREN'S ELECTRONIC MOTORCYCLE



OWNER'S MANUAL

Styles and colo(u)rs may vary.
Adult assembly required.

Read and understand this entire manual before using.

Before first time use, charge the battery for at least 8-12 hours.

Please keep this manual for future reference as it contains important information.

On the purchase of your new Ride-On.

This ride-on car will provide your child with many miles of riding of enjoyment. To help assure you and your rider a safe ride we ask you to please read this manual carefully, and keep it for future reference.

Follow the recommendations in this manual, they are designed to improve the safety and operation of your ride-on car and it's rider.

A

About Your New Vehicle

Suitable age:	36~96 months
Battery:	6V4.5AH
Charge time:	8~12 hours
Charger:	Input Depend on local voltage. DC 6V500mA
Load capacity:	under 30kg
Size of car:	73*40*50 cm
Speed:	3 km/h
Motor:	380-6V-10500



WARNING:

- **CHOKING HAZARD!** Not suitable for children under 36 months.
- **ADULT ASSEMBLY REQUIRED.**

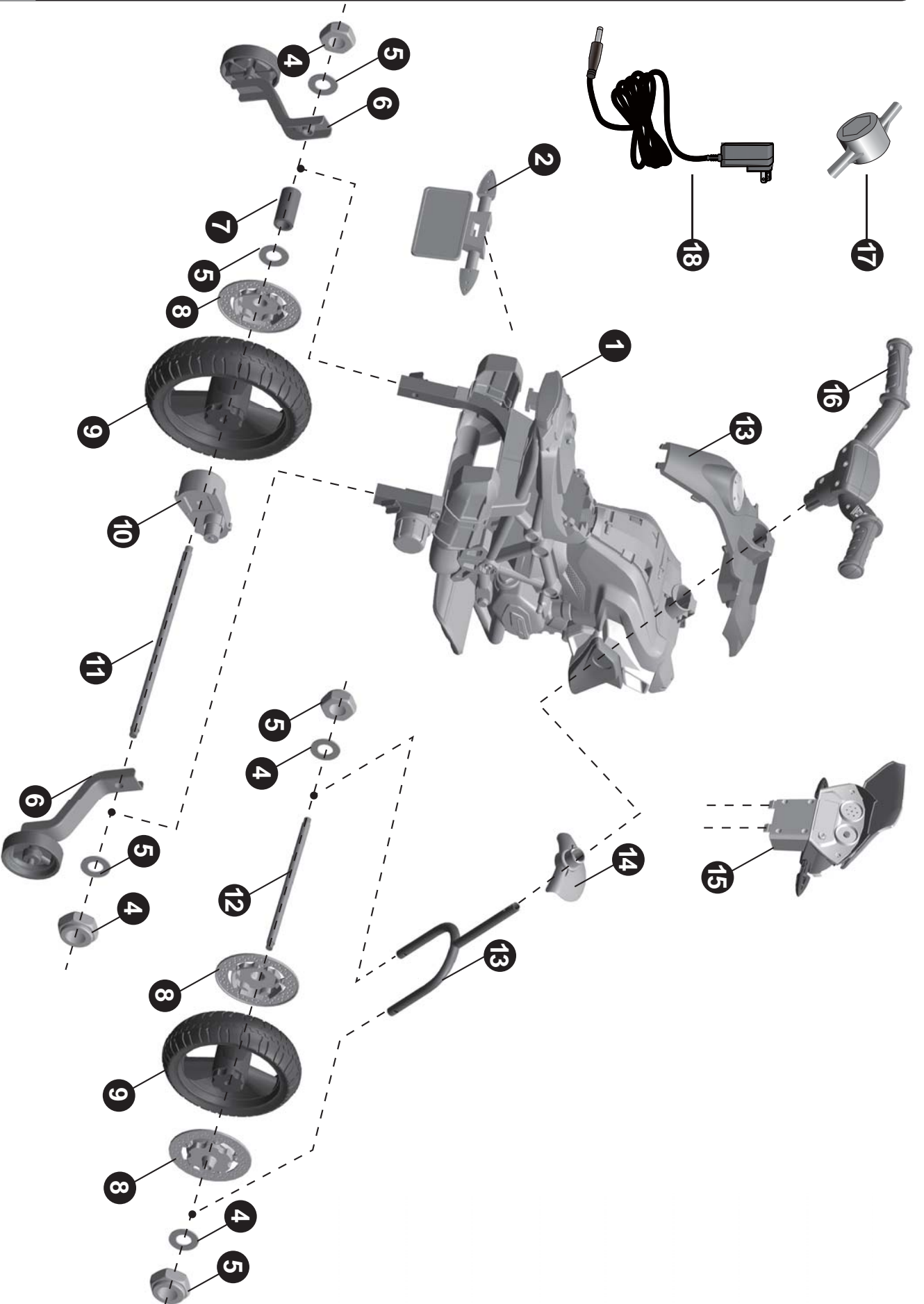
PART NO.	PART NAME	Q'TY (PCS)		REMARKS
1	Vehicle body	1		
2	Rear number plate	1		
3	Tank cover	1		
4	Lock nut	4		
5	Ø8 washer	5		
6	Side wheel	2		
7	Iron tube	1		
8	Brake	3		
9	Wheel	2		
10	Gear box	1		
11	Rear axle	1		
12	Front axle	1		
13	Front fork	1		
14	Front fender	1		
15	Face guard	1		
16	Handle bar	1		
17	Spanner	2		
18	Charger	1		



BATTERY INFORMATION

- Non-rechargeable batteries are not to be recharged.
- Rechargeable batteries are to be removed from the toy before being charged.
- Rechargeable batteries are only to be charged under adult supervision.
- Different types of batteries or new and used batteries are not to be mixed.
- Batteries are to be inserted with the correct polarity.
- Exhausted batteries are to be removed from the toy.
- The supply terminals are not to be short-circuited.

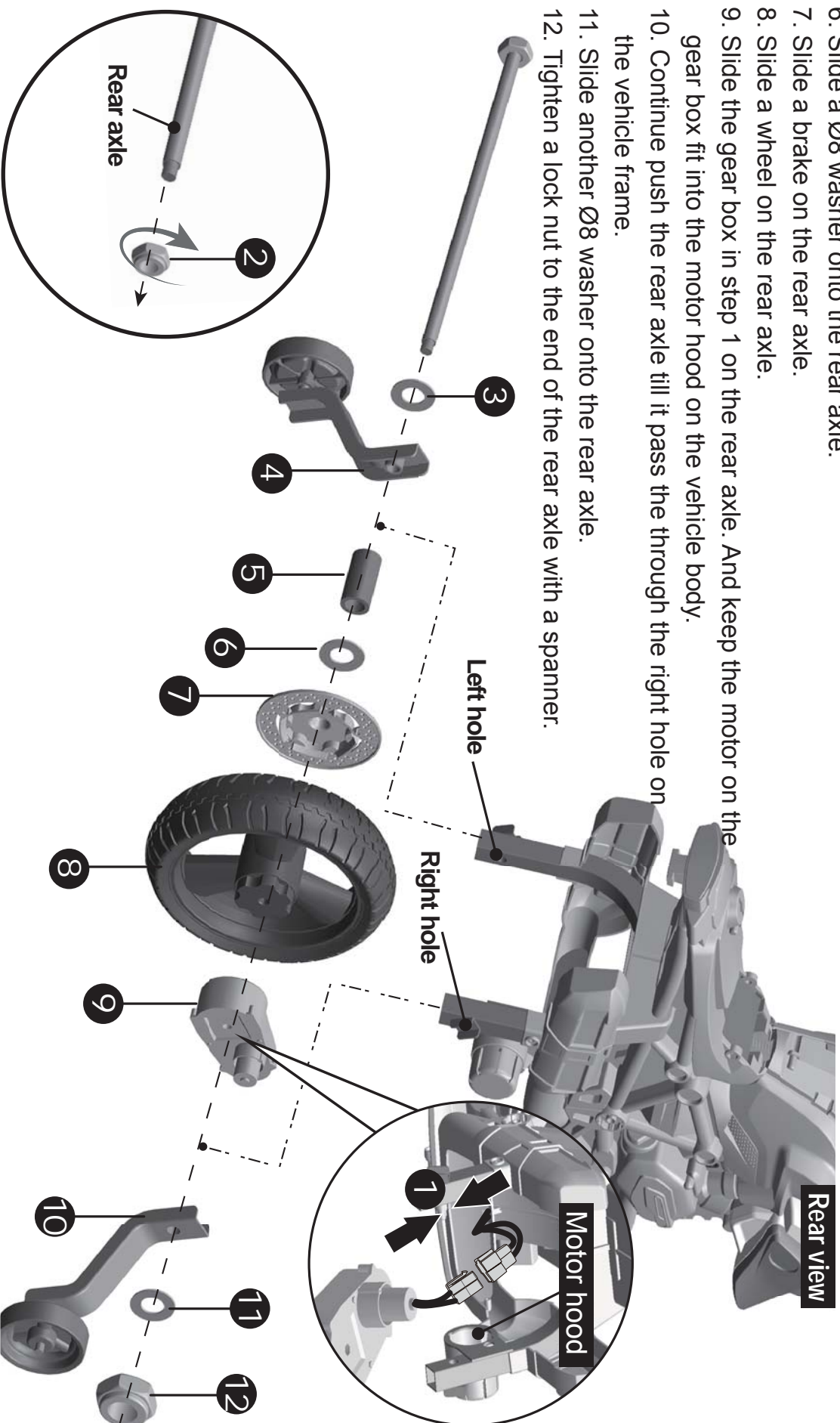
Parts Diagram

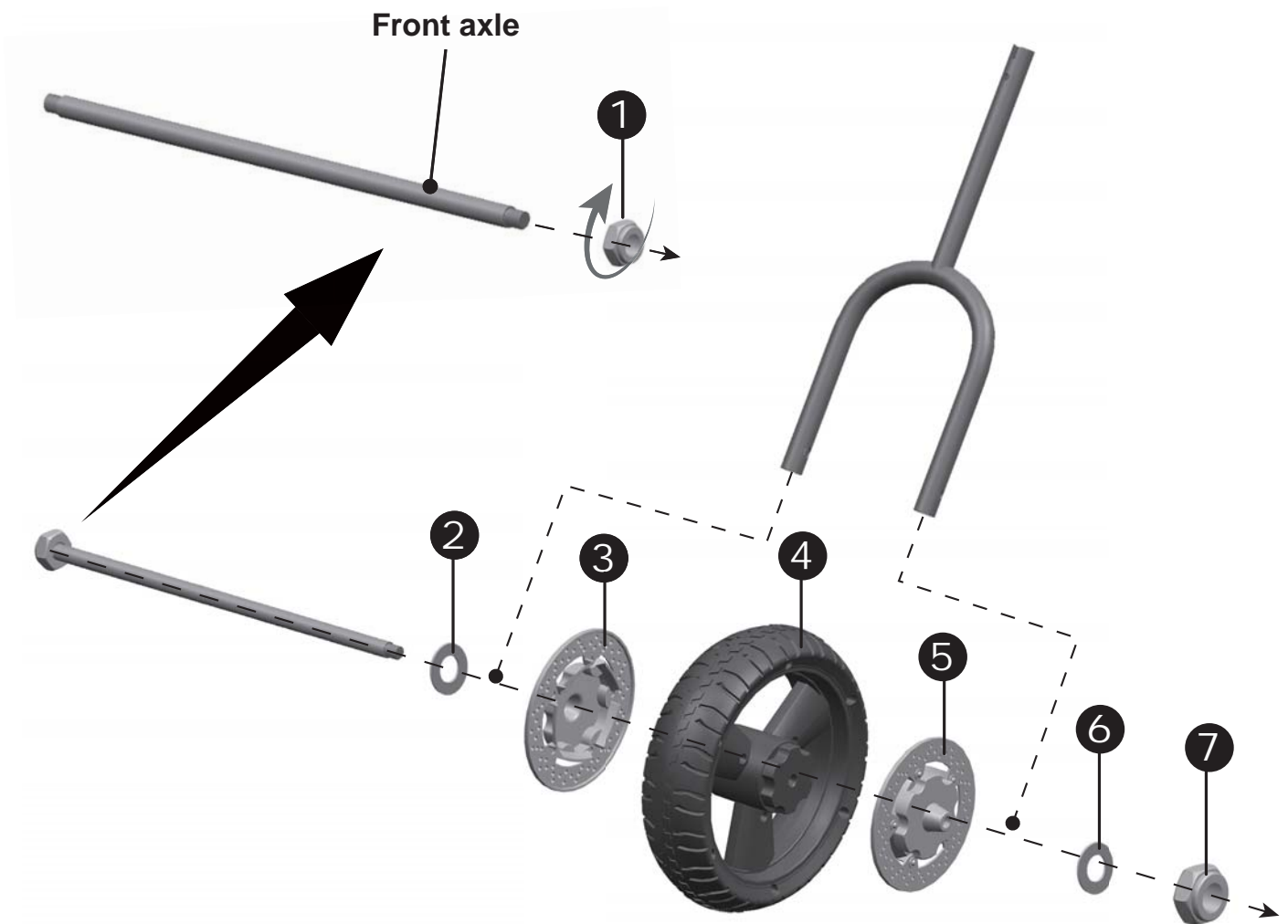


NOTE: Some parts shown are assembled on both sides of vehicle

Attach the Rear Wheel

1. Plug the connector on the gear box into the connector on the vehicle body.
2. Tighten a lock nut to the end of the rear axle with a spanner.
3. Slide a Ø8 washer onto the rear axle.
4. Insert the rear axle into the hole on the side wheel, push the rear axle till it pass through the left hole on the vehicle frame.
5. Slide a iron tube on the rear axle.
6. Slide a Ø8 washer onto the rear axle.
7. Slide a brake on the rear axle.
8. Slide a wheel on the rear axle.
9. Slide the gear box in step 1 on the rear axle. And keep the motor on the gear box fit into the motor hood on the vehicle body.
10. Continue push the rear axle till it pass the through the right hole on the vehicle frame.
11. Slide another Ø8 washer onto the rear axle.
12. Tighten a lock nut to the end of the rear axle with a spanner.

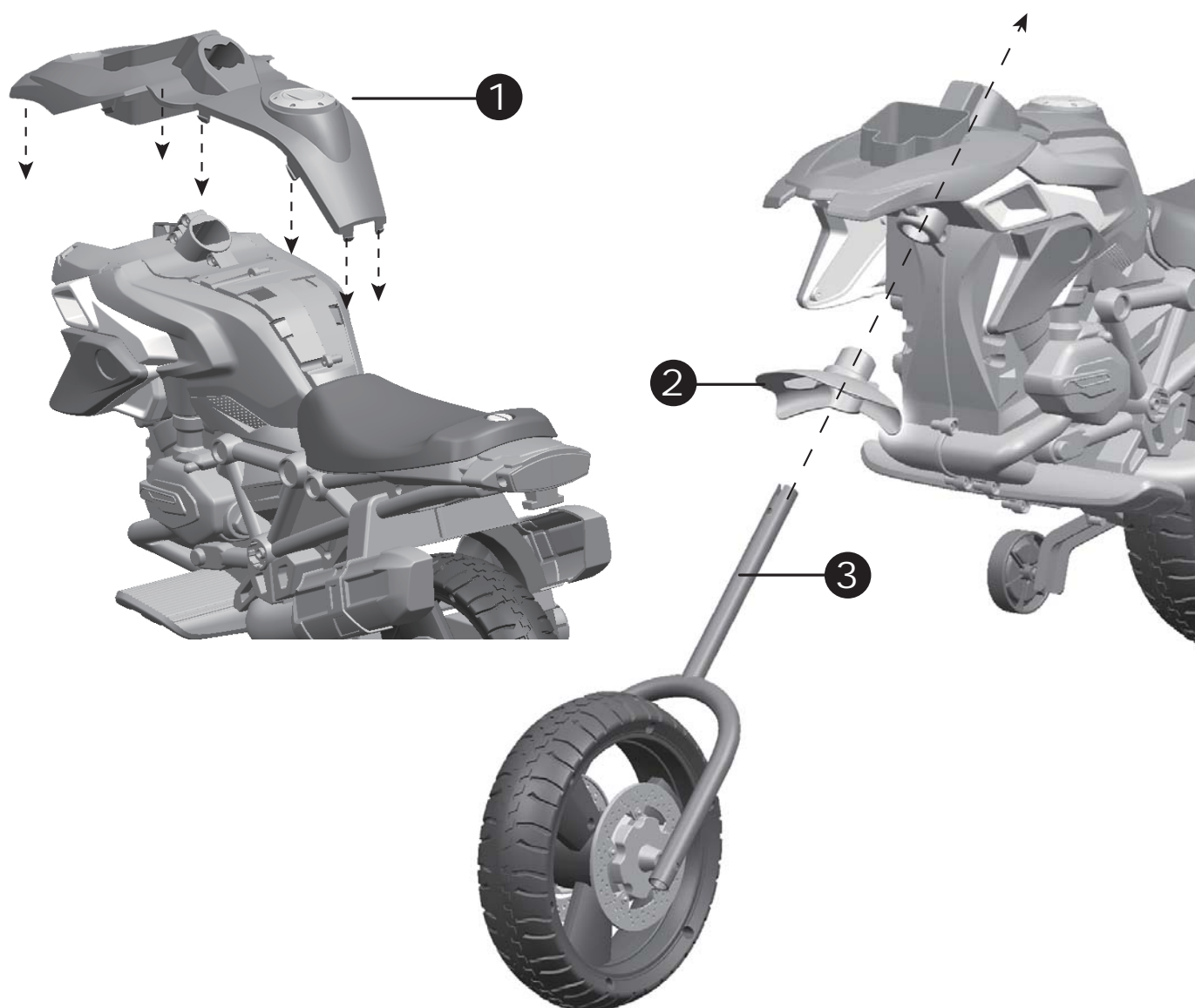




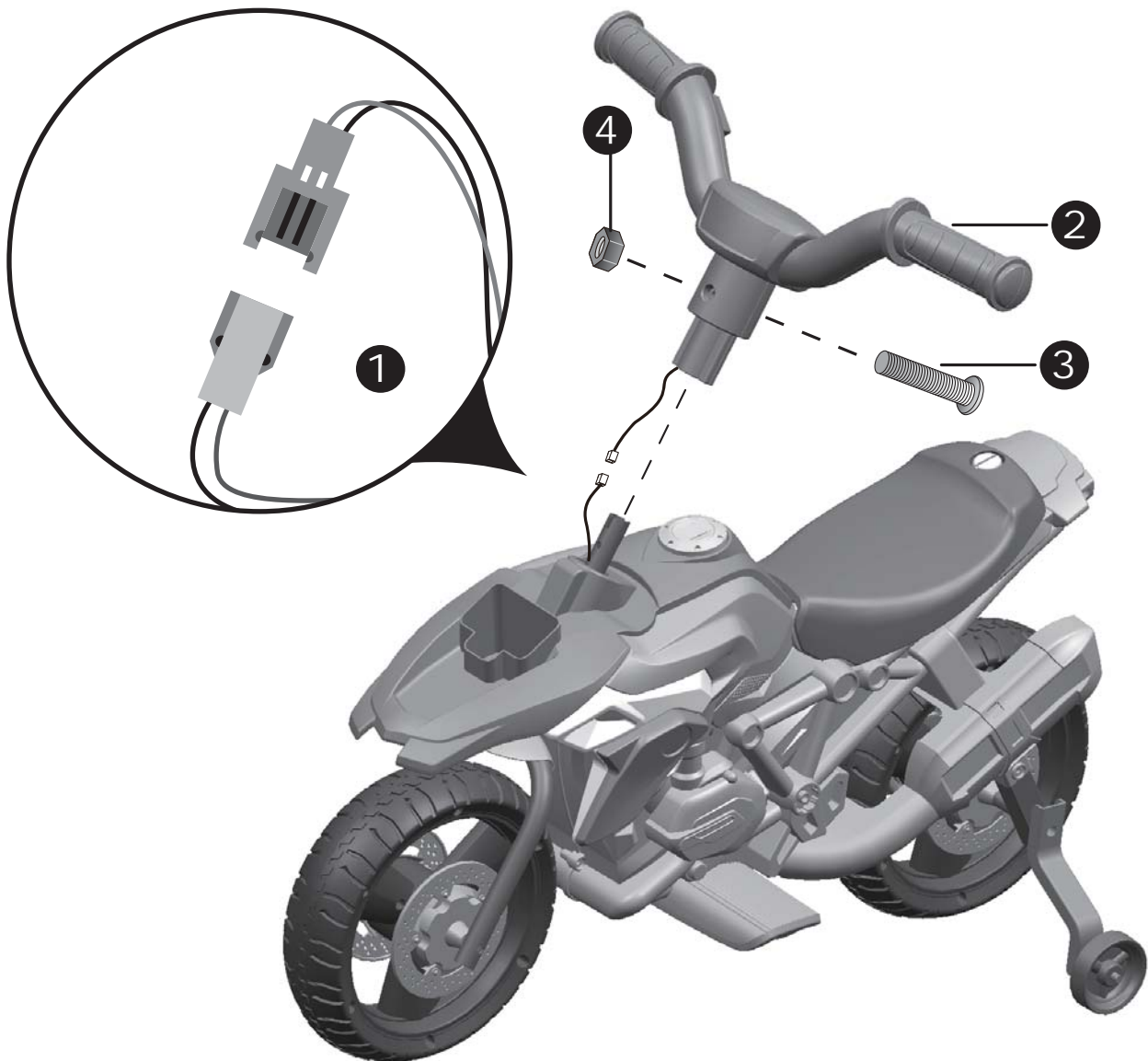
1. Tighten a lock nut to the end of the front axle with a spanner.
2. Slide a Ø8 washer onto the front axle.
3. Insert the front axle through the hole on one side of the front fork. Slide a brake on the front axle.
4. Slide a wheel on the front axle.
5. Slide another brake on the front axle.
6. Continue push the front axle till it pass the through the hole on the other side of the front fork. Slide another Ø8 washer onto the front axle.
7. Tighten a lock nut to the end of the front axle with a spanner.

Attach the Handle Bar-1

D



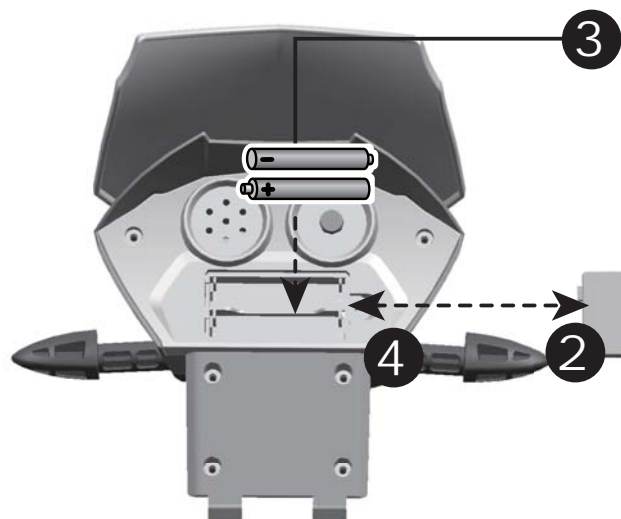
1. Insert the tabs on the tank cover into the slots on the vehicle, push until you hear it “click” into place.
2. Fit the front fender onto the front wheel assembly.
3. Insert the front fork into the hole on the front vehicle and out the hole on the tank cover.

D**Attach the Handle Bar-2**

1. Plug the sound unit connector on the handle bar into the connector on the vehicle body.
2. Fit the handle bar to the end of the front fork.
3. Line up the holes on the steering wheel with the holes on the steering column, insert the M5x35 machine screw.
4. Fasten a Ø5nut on the opposite end of the screw with a screwdriver.

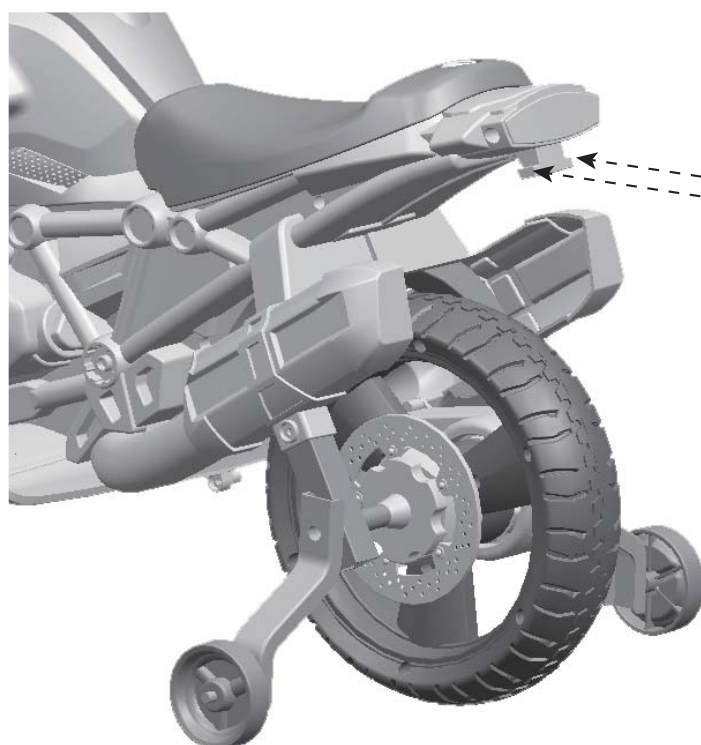
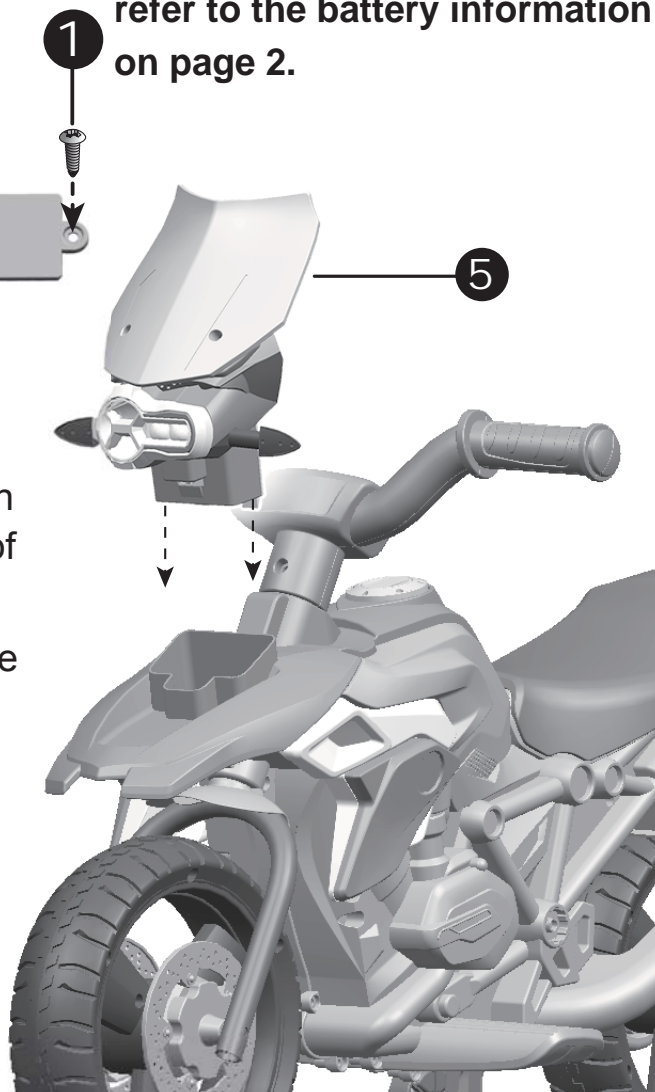
Attach the Face guard & Rear Number Plate

D



Batteries Not Included, and refer to the battery information on page 2.

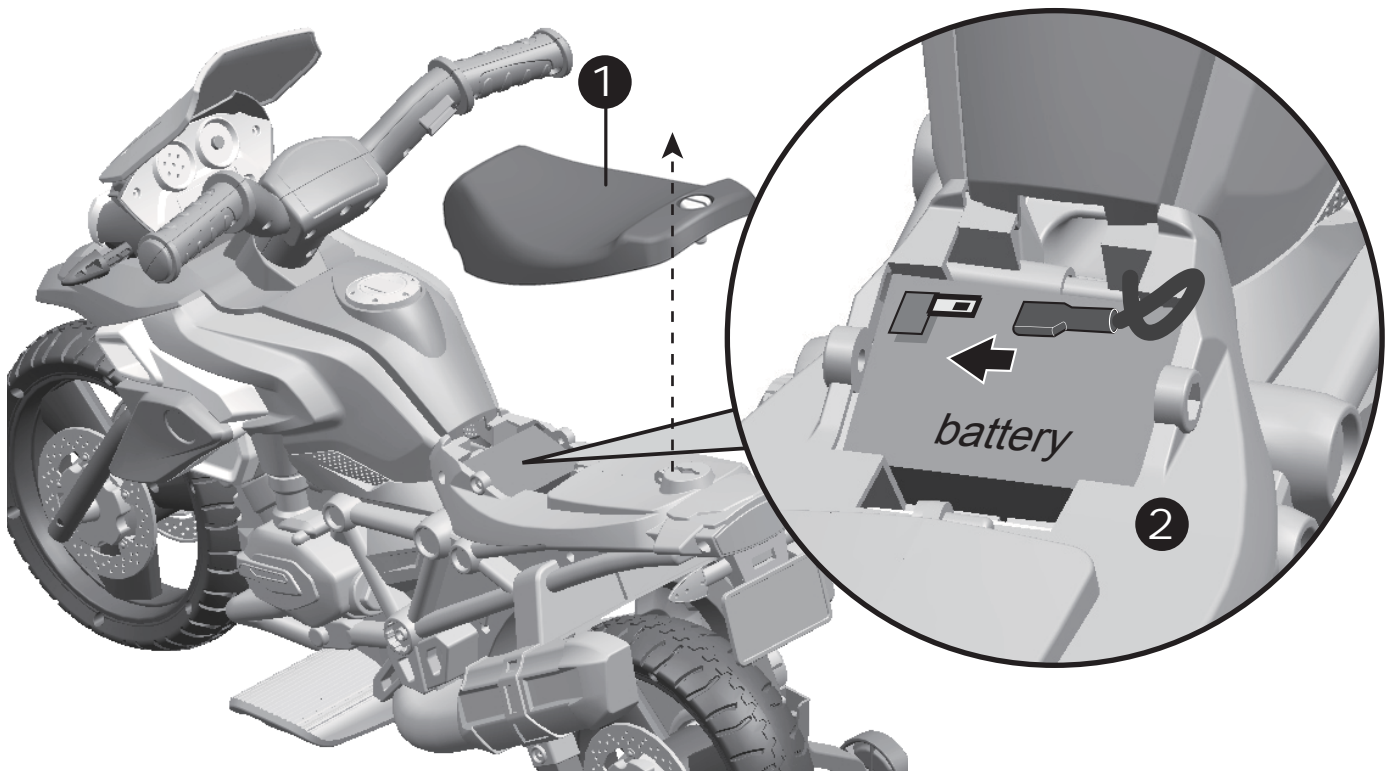
1. With a screwdriver remove the screw on the battery cover located in the center of the Face guard.
2. Remove the battery cover from the Face guard.
3. Insert two AAA batteries in their correct polarities.
4. Replace the battery cover.



5. Insert the tabs on Face guard into the opening on the tank cover, push until you hear it “click” into place.
6. Fit the the rear number plate to the vehicle body.

D

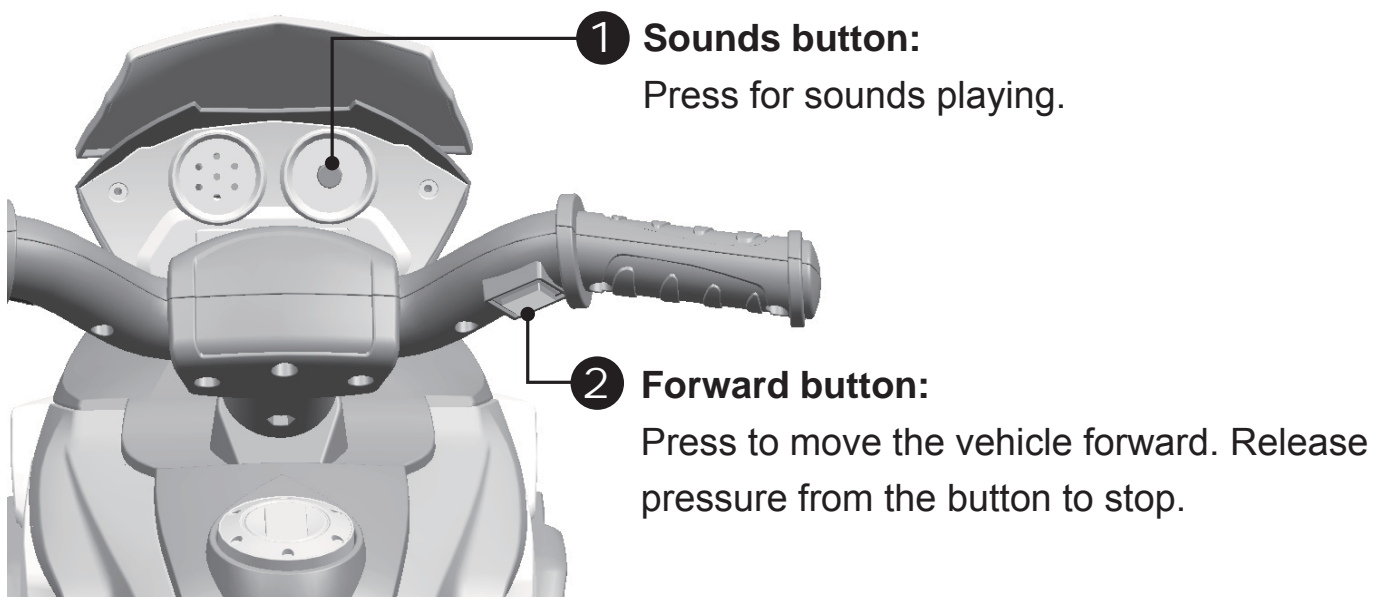
Connect the Power Supply



1. Using a screwdriver to remove the seat.
2. Plug the red power connector into the red terminal on the battery. Replace the Seat.

E

Use Your New Vehicle



Troubleshooting Guide

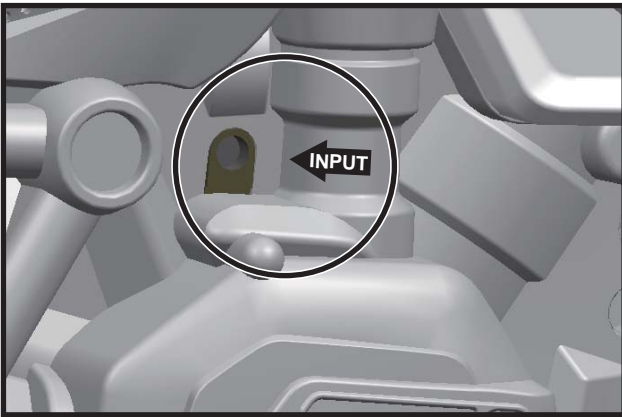
F

Problem	Possible Cause	Solution
Vehicle does not run	Battery low on power	Recharge battery.
	Thermal fuse has tripped	The fuse will reset automatically in 20 seconds.
	Battery connector or wires are loose	Check that the battery connectors are firmly plugged into each other. If wires are loose around the motor contact your distributor please.
	Battery is dead	Replace battery, contact your distributor please.
	Electrical system is damaged	Contact your distributor please.
	Motor is damaged	Contact your distributor please.
Vehicle does not run very long	Battery is under charged	Check that the battery connectors are firmly plugged into each other when recharging
	Battery is old	Replace battery, contact your distributor please.
Vehicle runs sluggishly	Battery low on power	Recharge battery, contact your distributor please.
	Battery is old	Replace battery, contact your distributor please.
	Vehicle is overload	Reduce weight on vehicle. Maximum user weight is 30kg.
	Vehicle is being used in harsh conditions	Avoid using vehicle in harsh conditions, see <Maintaining>.
Vehicle needs a push to go forward	Poor contact of wires or connectors	Check that the battery connectors are firmly plugged into each other. If wires are loose around the motor, contact your distributor please.
	“Dead Spot” on motor	A dead spot means the electric power is not being delivered to the terminal connection and the vehicle needs repair. Contact your distributor please.
Difficult shifting from forward to reverse or vice-versa	Attempting to shift while the vehicle is motion	Completely stop the vehicle and shift, see <Use Your New Vehicle>
Loud grinding or clicking noises coming from motor or gear box	Motor or gears are damaged	Contact your distributor please.
Battery will not recharge	Battery connector or adapter connector is loose	Check that the battery connectors are firmly plugged into each other.
	Charger not plugged in	Check that the battery charger is plugged into a working wall outlet.
	Charger is not working	Contact your distributor please.
Charger feels warm when recharging	This is normal and not a cause for concern	

Completely read through this manual and the troubleshooting guide table before calling. If you still need help resolving the problem **Contact your distributor please.**

G

Charging



- The POWER SWITCH must be turned in **OFF** position when charging.
- Before the first use, you should charge the battery for 4-6 hours. Do not recharge the battery for more than 10 hours to avoid overheating the charger.
- When the vehicle begins to run slowly, recharge the battery.
 1. Open the charger cover. Plug the charger port into the input socket. (The input socket is above the right foot board.)
 2. Plug the charger plug into a wall outlet. The battery will begin charging.

H

Maintaining

- It is parents' responsibility to check main parts of the toy before using, Must regularly examine for potential hazard, such as the battery, charge, cable or cord, plug, screws are fastening enclosure of other parts and that in the event of such damage, the toy must not be until that damage had been properly removed.
- Make sure the plastic parts of the vehicle are not cracked or broken.
- Occasionally use a lightweight oil to lubricate moving parts such as wheels.
- Park the vehicle indoors or cover it with a tarp to protect it from wet weather.
- Keep the vehicle away from sources of heat, such as stoves and heaters. Plastic parts may melt.
- Recharge the battery after each use. Only an adult can handle the battery. Recharge the battery at least once a month when the vehicle Raider is not being used.
- Do not wash the vehicle with a hose. Do not wash the vehicle with soap and water. Do not drive the vehicle in rainy or snowy weather. Water will damage the motor, electric system and battery.
- Clean the vehicle with a soft, dry cloth. To restore shine to plastic parts, use a non-wax furniture polish. Do not use car wax. Do not use abrasive cleaners.
- Do not drive the vehicle in loose dirt, sand or fine gravel which could damage moving parts, motors or the electric system.
- When not using, all the electrical source should be turn off. Turn off the power switch and disconnect the battery connection.



Our products are suitable for ASTM F963; GB6675; EN71 and EN62115 standard.